



STAHLKIND[®]

DESIGN
PROTOTYPE
MANUFACTURE

COMPANY BROCHURE



ABOUT US

Founded in 2017, STAHLKIND is a premier contract manufacturing specialist, specializing in the production of bespoke sheet metal components. We take immense pride in our ISO9001 certification, a testament to our unwavering commitment to quality and excellence. With a dedicated design team at our core, we bring innovation and precision to every project, ensuring that our customers' unique requirements are met with utmost precision.

One of our key strengths lies in **prototyping and value engineering** services that are often challenging to find in larger volume manufacturing firms. We understand the importance of providing our clients with prototypes to validate their designs and ideas, enabling them to make informed decisions. We also focus on **cost reduction**, working closely with our clients to identify opportunities for cost savings while maintaining product quality.

Our commitment to **on-time delivery** is unwavering. We understand that timely delivery is critical from a customer's perspective, and we prioritize meeting deadlines to ensure our clients can rely on us for seamless production processes.

At STAHLKIND, we believe in forging lasting partnerships with our customers, where quality, innovation, and customer-centricity converge to create exceptional solutions in the world of sheet metal manufacturing.

OUR SERVICES



PRODUCT DESIGN



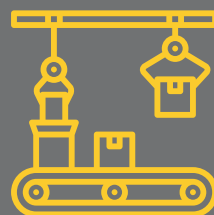
VALUE ENGINEERING



PROTOTYPING



PILOT PRODUCTION

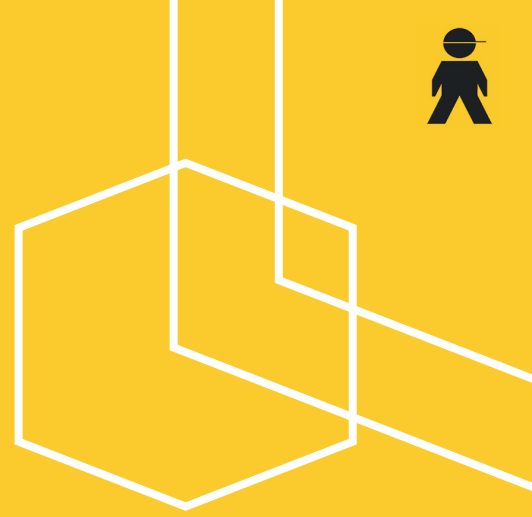


MANUFACTURING



OUR VISION

"Our vision is to be a world-class provider of precision mechanical components, delivering unparalleled quality and service to our customers in a variety of industries, by continuously investing in advanced technologies, developing our workforce and fostering long-term partnerships. "



OUR MISSION

"Our mission is to provide our customers with the highest quality mechanical components and assemblies, while utilizing the most advanced technologies, and adhering to the strictest standards of accuracy and efficiency, all while maintaining our commitment to meeting and exceeding customer expectations, continuous improvement and sustainability."

INDUSTRIES WE CATER



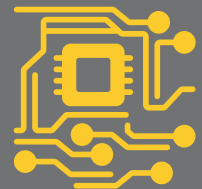
AUTOMOTIVE



TELECOM



MEDICAL



ELECTRONICS



ROBOTICS



AEROSPACE



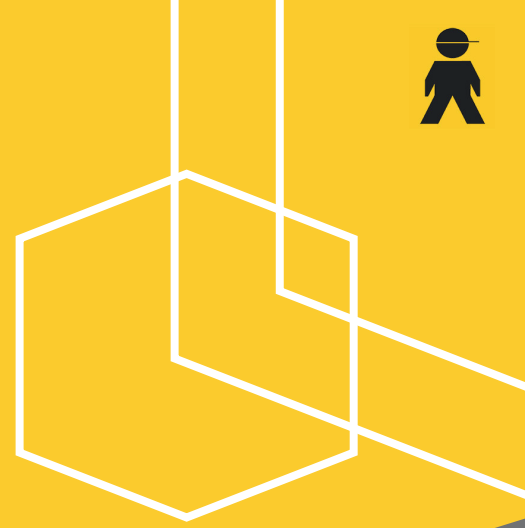
IOT



ARCHITECTURE

OUR PRODUCTS

Sheet Metal



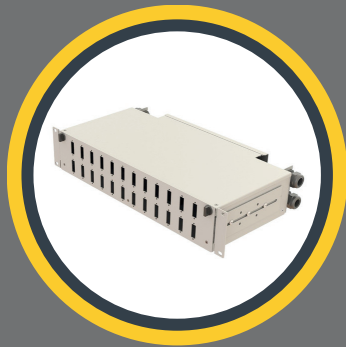
Precision Sheetmetal Enclosures



Racks and Distribution Panels



Custom Sheet Metal Parts



Rack Panels and Accessories



Medical Device enclosures



Aluminium Enclosures



Sheet metal Kiosks

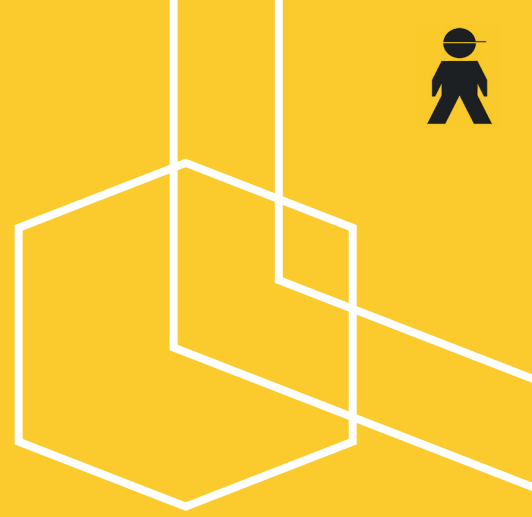


Stainless Steel enclosures



IP rated Enclosures

OUR CAPABILITIES



LASER CUTTING



CNC BENDING



FASTNER INSERTION



WELDING
TIG/MIG/LASER



SURFACE FINISHING



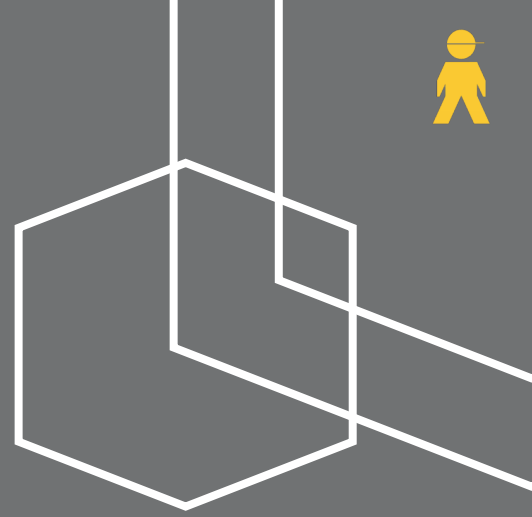
POWDER COATING



SCREEN PRINTING



CUSTOM PACKAGING



WHY STAHLKIND?

- **Experience and Expertise:**

With years of experience in sheet metal manufacturing, our team boasts deep expertise in the field. We have successfully delivered a wide range of projects, making us well-equipped to tackle even the most complex challenges.

- **Custom Solutions:**

We excel at providing tailor-made solutions to meet the unique needs of our clients. Whether it's a specific design requirement or a complex fabrication request, we pride ourselves on crafting solutions that align with your vision.

- **Quality Assurance:**

Quality is at the heart of everything we do. Our stringent quality control processes ensure that every component we produce meets the highest industry standards. We are committed to delivering products of exceptional quality.

- **Competitive Pricing:**

We understand the importance of cost-effectiveness. Our commitment to competitive pricing means you get the best value for your investment without compromising on quality or service.

- **On-Time Delivery:**

Timeliness is a cornerstone of our service. We know that meeting deadlines is crucial to your success, and we go to great lengths to ensure that your components are delivered on schedule, every time.

- **Exceptional Customer Service:**

Our dedicated customer service team is here to assist you at every step of your project. We prioritize clear communication, responsiveness, and a commitment to making your experience with us seamless and hassle-free.

- **Strict IP Non-Disclosure Policy:**

We take the protection of your intellectual property seriously. Our strict non-disclosure agreements ensure that your proprietary information remains confidential and secure throughout our collaboration.

OUR CLIENTELE





ENGINEERING PROTOTYPING SERVICE

ABOUT SERVICE

At STAHLKIND, we understand that turning your brilliant ideas into reality requires exceptional engineering components. That's why we are thrilled to introduce our brand-new prototyping service tailored for startups and R&D companies, designed to streamline your journey from concept to creation.

Our mission is to be your go-to partner in bringing your innovative visions to life. With our extensive expertise in custom mechanical engineering components, we are committed to being the catalyst that drives your success. Our prototyping service is more than just a service; it's your gateway to cutting-edge technology, precision, and innovation.

OUR PRODUCTS

- SHEET METAL COMPONENTS & ASSEMBLIES
- MACHINED COMPONENTS
- PLASTIC COMPONENTS
- 3D PRINTED COMPONENTS

WHY CHOOSE US ?

- EXPERTISE
- QUALITY ASSURANCE
- COST EFFECTIVE SOLUTIONS
- SINGLE POINT SOURCING
- QUICK TURN AROUND
- CUSTOMER CENTRIC APPROACH



OUR SERVICES



DESIGN &
DEVELOPMENT

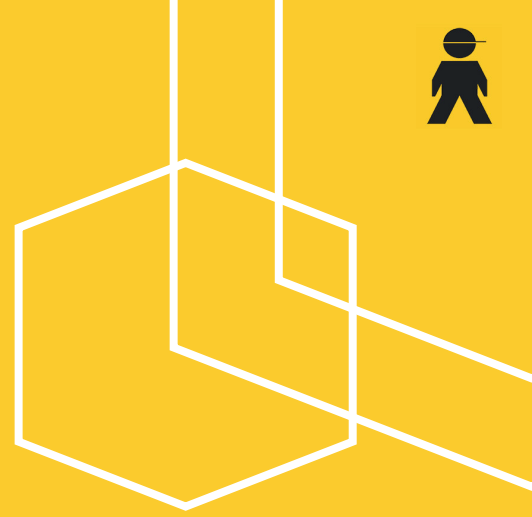


DFM &
VALUE ENGINEERING



PROTOTYPING &
MANUFACTURING

FAQs



- **HOW LONG DOES IT TAKE TO RECEIVE A QUOTE?**

The typical turnaround time for a new quotation is just 3-5 business days. We appreciate your patience and understanding as we work to finalize your quote.

- **HOW LONG ARE YOUR QUOTES VALID?**

Due to constantly fluctuating material prices, our quotes are valid for thirty (30) days from the issue date.

- **DO YOU HAVE NON-DISCLOSURE AGREEMENTS IN PLACE WITH YOUR CUSTOMERS?**

Yes, we have non-disclosure agreements in place with many of our customers. We can extend the same courtesy to you if desired.

- **HOW LONG ARE YOUR LEAD TIMES?**

Lead times vary from part to part, but a rule of thumb is 1-2 weeks for samples and 3-4 weeks for production parts. Please note that production lead times begin only after the receipt of approval of first article samples, purchase order, and funds.

- **DO YOU EVER 'NO QUOTE' JOBS?**

When an RFQ does not meet our minimum order quantity (MOQ) requirement or does not fall within our capabilities, STAHLKIND will respectfully 'no quote' that job. We thoroughly evaluate each RFQ that is submitted to our team before deciding not to quote a particular job. We have formed expert relationships with many manufacturers and in the event we cannot quote your part, we would be happy to refer you to another contract manufacturer that may be able to help.



#startupindia



OFFICE

T & T Residency
West Fort Road
Palakkad
Kerala, India
678001



FACTORY

D-115, KINFRA IITP
Kanjikode
Palakkad
Kerala, India
678621